

Appeals – Student Guide

How do I make a concession application?

Concession forms are available from ELITE.
left hand menu
concession forms by course.

You must fill out the form following the detailed instructions provided with it. Then, return the form with supporting documents by email to the centre specific address indicated on the form. This must be done within seven calendar days of the date of the exam or hand

Appeals – Student Guide

explanation that there were exceptional circumstances which justified your delay in submission.

I have a question not covered here

For further details on concessions or Stage One Appeals Assessment Office at assessments-yourcentre@law.ac.uk, for example assessments-bloomsbury@law.ac.uk.

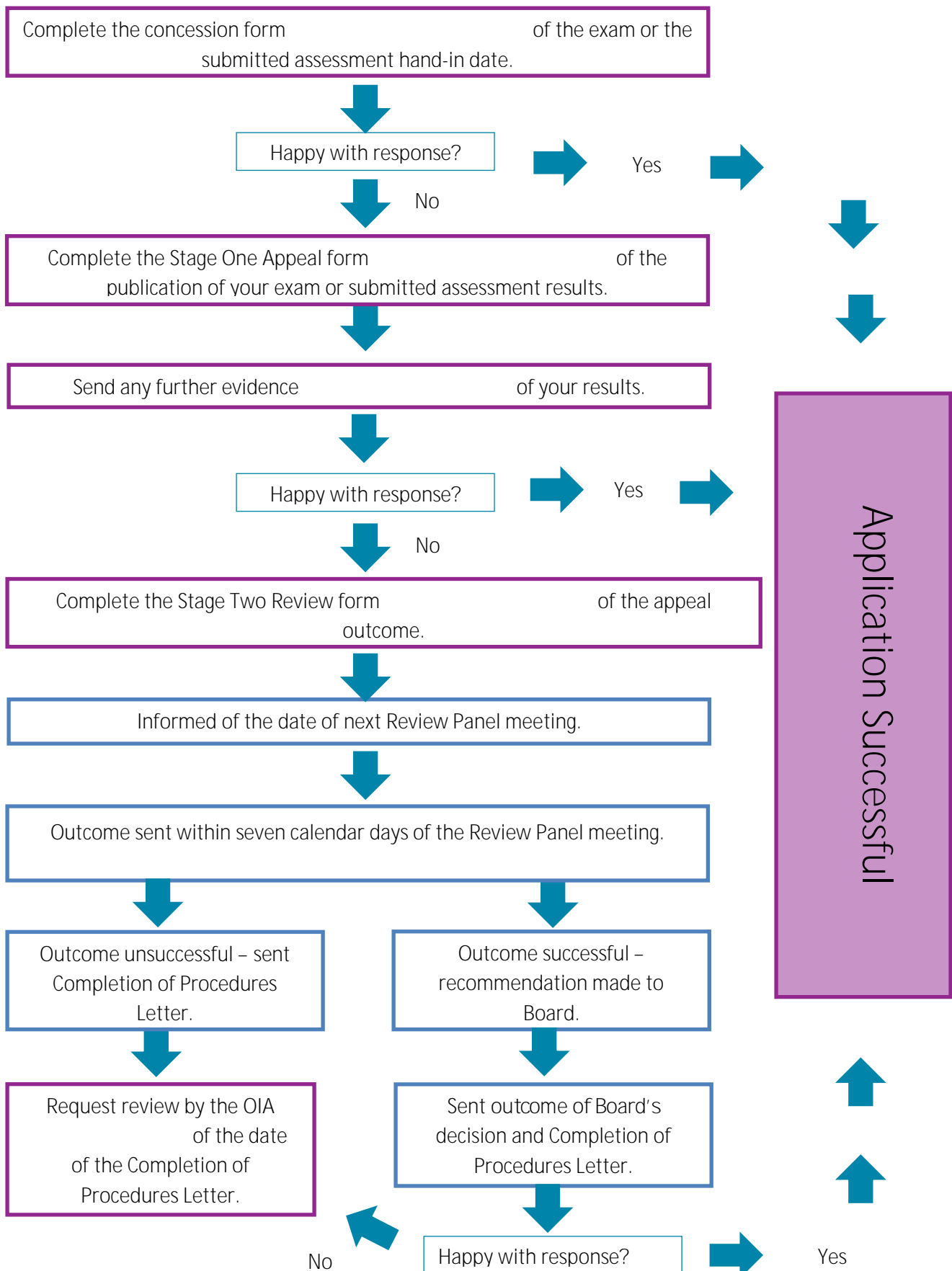
For details about Stage Two Reviews, please contact the Academic Registry at academic.registry@law.ac.uk.

You can also request advice from your Course Leader or Head of Students on what grounds you can use to submit a concession/appeal, and what evidence will be required.

Appeals – Student Guide



Appeals



Version History

Version	Amended by	Revision summary	Date
1.0			September 2016
1.1	Senior Quality Officer	Change to the document coding convention	March 2020
V1.1	Registry Assistant	Extension approved for 2 years	October 2021